



# Manual

Version 0.9.5  
15 September 2013

Christophe Riccio  
[glm@g-truc.net](mailto:glm@g-truc.net)



Copyright © 2005–2013, [G-Truc Creation](http://www.g-truc.net)

Copyright (c) 2005 - 2013 G-Truc Creation ([www.g-truc.net](http://www.g-truc.net))

Permission is hereby granted, free of charge, to any person obtaining a copy of this software and associated documentation files (the "Software"), to deal in the Software without restriction, including without limitation the rights to use, copy, modify, merge, publish, distribute, sublicense, and/or sell copies of the Software, and to permit persons to whom the Software is furnished to do so, subject to the following conditions:

The above copyright notice and this permission notice shall be included in all copies or substantial portions of the Software.

THE SOFTWARE IS PROVIDED "AS IS", WITHOUT WARRANTY OF ANY KIND, EXPRESS OR IMPLIED, INCLUDING BUT NOT LIMITED TO THE WARRANTIES OF MERCHANTABILITY, FITNESS FOR A PARTICULAR PURPOSE AND NONINFRINGEMENT. IN NO EVENT SHALL THE AUTHORS OR COPYRIGHT HOLDERS BE LIABLE FOR ANY CLAIM, DAMAGES OR OTHER LIABILITY, WHETHER IN AN ACTION OF CONTRACT, TORT OR OTHERWISE, ARISING FROM, OUT OF OR IN CONNECTION WITH THE SOFTWARE OR THE USE OR OTHER DEALINGS IN THE SOFTWARE.



# Table of Contents

<b>INTRODUCTION</b>	<b>5</b>
<b>1. GETTING STARTED</b>	<b>6</b>
1.1. SETUP	6
1.2. USE SAMPLE OF GLM CORE	6
1.3. DEPENDENCIES	6
1.4. GLM EXTENSIONS	6
1.5. OPENGL INTEROPERABILITY	7
<b>2. ADVANCED USAGES</b>	<b>8</b>
2.1. NOTIFICATION SYSTEM	8
2.2. FASTER PROGRAM COMPILATION	8
2.3. PRECISION QUALIFIERS	8
2.4. DEFAULT PRECISION	9
2.5. FORCE USE OF RADIANS	10
2.6. C++ LANGUAGE DETECTION	10
2.7. CUDA SUPPORT	10
2.8. SIMD SUPPORT	11
2.9. FORCE INLINE	11
<b>3. SWIZZLE OPERATORS</b>	<b>12</b>
3.1. DEFAULT C++98 IMPLEMENTATION	12
3.2. ANONYMOUS UNION MEMBER IMPLEMENTATION	13
<b>4. DEPRECATED FUNCTION REPLACEMENTS</b>	<b>14</b>
4.1. OPENGL FUNCTIONS (SECTION 2.11.2 MATRICES, OPENGL 2.1 SPECIFICATION)	14
4.2. GLU FUNCTIONS (CHAPTER 4: MATRIX MANIPULATION, GLU 1.3 SPECIFICATION)	15
<b>5. EXTENSIONS</b>	<b>17</b>
5.1. GLM_GTC_CONSTANTS	17
5.2. GLM_GTC_EPSILON	17
5.3. GLM_GTC_MATRIX_ACCESS	17
5.4. GLM_GTC_MATRIX_INTEGER	17
5.5. GLM_GTC_MATRIX_INVERSE	17
5.6. GLM_GTC_MATRIX_TRANSFORM	17
5.7. GLM_GTC_NOISE	18
5.8. GLM_GTC_PACKING	21
5.9. GLM_GTC_QUATERNION	21
5.10. GLM_GTC_RANDOM	21
5.11. GLM_GTC_RECIPROCAL	24
5.12. GLM_GTC_SWIZZLE	24
5.13. GLM_GTC_TYPE_PRECISION	24
5.14. GLM_GTC_TYPE_PTR	25
5.15. GLM_GTC_ULP	26
<b>6. KNOWN ISSUES</b>	<b>27</b>

<b>6.1. NOT FUNCTION</b>	<b>27</b>
<b>6.2. SWIZZLE OPERATOR LIMITATIONS</b>	<b>27</b>
<b>6.3. PRECISION QUALIFIERS SUPPORT</b>	<b>27</b>
<b>7. FAQ</b>	<b>28</b>
<b>7.1 WHY GLM FOLLOWS GLSL SPECIFICATION AND CONVENTIONS?</b>	<b>28</b>
<b>7.2. DOES GLM RUN GLSL PROGRAM?</b>	<b>28</b>
<b>7.3. DOES A GLSL COMPILER BUILD GLM CODES?</b>	<b>28</b>
<b>7.4. SHOULD I USE 'GTX' EXTENSIONS?</b>	<b>28</b>
<b>7.5. WHERE CAN I ASK MY QUESTIONS?</b>	<b>28</b>
<b>7.6. WHERE CAN I FIND THE DOCUMENTATION OF EXTENSIONS?</b>	<b>28</b>
<b>7.7. SHOULD I USE 'USING NAMESPACE GLM;'</b>	<b>28</b>
<b>7.8. IS GLM FAST?</b>	<b>28</b>
<b>7.9. WHEN I BUILD WITH VISUAL C++ WITH /W4 WARNING LEVEL, I HAVE WARNINGS...</b>	<b>29</b>
<b>7.10. WHY SOME GLM FUNCTIONS CAN CRASH BECAUSE OF DIVISION BY ZERO?</b>	<b>29</b>
<b>8. CODE SAMPLES</b>	<b>30</b>
<b>8.1. COMPUTE A TRIANGLE NORMAL</b>	<b>30</b>
<b>8.2. MATRIX TRANSFORM</b>	<b>30</b>
<b>8.3. VECTOR TYPES</b>	<b>31</b>
<b>8.4. LIGHTING</b>	<b>31</b>
<b>9. REFERENCES</b>	<b>33</b>
<b>9.1. GLM DEVELOPMENT</b>	<b>33</b>
<b>9.2. OPENGL SPECIFICATIONS</b>	<b>33</b>
<b>9.3. EXTERNAL LINKS</b>	<b>33</b>
<b>9.4. PROJECTS USING GLM</b>	<b>33</b>
<b>9.5. OPENGL TUTORIALS USING GLM</b>	<b>35</b>
<b>9.6. ALTERNATIVES TO GLM</b>	<b>35</b>
<b>9.7. ACKNOWLEDGEMENTS</b>	<b>35</b>
<b>9.8. QUOTES FROM THE WEB</b>	<b>36</b>

# Introduction

OpenGL Mathematics (GLM) is a C++ mathematics library for graphics C++ programs based on the OpenGL Shading Language (GLSL) specifications.

GLM provides classes and functions designed and implemented with the same naming conventions and functionalities than GLSL so that when a programmer knows GLSL, he knows GLM as well which makes it really easy to use.

This project isn't limited to GLSL features. An extension system, based on the GLSL extension conventions, provides extended capabilities: matrix transformations, quaternions, half-based types, random numbers, noise, etc...

This library works perfectly with OpenGL but it also ensures interoperability with other third party libraries and SDK. It is a good candidate for software rendering (raytracing / rasterisation), image processing, physic simulations and any development context that requires a simple and convenient mathematics library.

GLM is written in C++98 but can take advantage of C++11 when supported by the compiler. It is a platform independent library with no dependence and it officially supports the following compilers:

- Clang 2.6 and higher
- CUDA 3.0 and higher
- GCC 3.4 and higher
- Intel C++ Composer XE 2013 and higher
- LLVM 2.3 through GCC 4.2 front-end and higher
- Visual Studio 2005 and higher
- Any conform C++98 or C++11 compiler

The source code and the documentation, including this manual, are licensed under the MIT license.

Thanks for contributing to the project by submitting reports for bugs and feature requests. Any feedback is welcome at [glm@g-truc.net](mailto:glm@g-truc.net).

# 1. Getting started

## 1.1. Setup

GLM is a header only library. Hence, there is nothing to build to use it. To use GLM, a programmer only has to include `<glm/glm.hpp>` in his program. This include provides all the GLSL features implemented by GLM.

## 1.2. Use sample of GLM core

```
#include <glm/glm.hpp>

int foo()
{
    glm::vec4 Position = glm::vec4(glm::vec3(0.0f), 1.0f);
    glm::mat4 Model = glm::mat4(1.0f);
    Model[3] = glm::vec4(1.0f, 1.0f, 0.0f, 1.0f);
    glm::vec4 Transformed = Model * Position;
    return 0;
}
```

## 1.3. Dependencies

When `<glm/glm.hpp>` is included, GLM provides all the GLSL features it implements in C++.

When an extension is included, all the dependent extensions will be included as well. All the extensions depend on GLM core. (`<glm/glm.hpp>`)

There is no dependence with external libraries or external headers like `gl.h`, `glcorearb.h`, `gl3.h`, `glu.h` or `windows.h`. However, if `<boost/static_assert.hpp>` is included, Boost static assert will be used all over GLM code to provide compiled time errors unless GLM is built with a C++ 11 compiler in which case static assert. If neither are detected, GLM will rely on its own implementation of static assert.

## 1.4. GLM extensions

GLM extends the core GLSL feature set with extensions. These extensions include: quaternion, transformation, spline, matrix inverse, color spaces, etc.

To include an extension, we only need to include the dedicated header file. Once included, the features are added to the GLM namespace.

```
#include <glm/glm.hpp>
#include <glm/gtc/matrix_transform.hpp>

int foo()
{
    glm::vec4 Position = glm::vec4(glm::vec3(0.0f), 1.0f);
    glm::mat4 Model = glm::translate(
        glm::mat4(1.0f), glm::vec3(1.0f));
    glm::vec4 Transformed = Model * Position;
}
```

```
...
    return 0;
}
```

## 1.5. OpenGL interoperability

It could be possible to implement `glVertex3fv(glm::vec3(0))` in C++ with the appropriate cast operator that would result as an implicit cast in this example. However cast operators may produce programs running with unexpected behaviours without build error or any form of notification.

```
// GLM_GTC_type_ptr extension provides a safe solution:
#include <glm/glm.hpp>
#include <glm/gtc/type_ptr.hpp>

void foo()
{
    glm::vec4 v(0.0f);
    glm::mat4 m(1.0f);
    ...
    glVertex3fv(glm::value_ptr(v))
    glLoadMatrixfv(glm::value_ptr(m));
}

// Another solution inspired by STL:
#include <glm/glm.hpp>

void foo()
{
    glm::vec4 v(0.0f);
    glm::mat4 m(1.0f);
    ...
    glVertex3fv(&v[0]);
    glLoadMatrixfv(&m[0][0]);
}
```

## 2. Advanced usages

### 2.1. Notification system

GLM includes a notification system which can display some information at build time:

- Platform: Windows, Linux, Native Client, QNX, etc.
- Compiler: Visual C++, Clang, GCC, ICC, etc.
- Build model: 32bits or 64 bits
- C++ version : C++98, C++11, MS extensions, etc.
- Architecture: x86, SSE, AVX, etc.
- Included extensions
- etc.

This system is disabled by default. To enable this system, define `GLM_MESSAGES` before any inclusion of `<glm/glm.hpp>`. The messages are generated only by compiler supporting `#program message` and only once per project build.

```
#define GLM_MESSAGES
#include <glm/glm.hpp>
```

### 2.2. Faster program compilation

GLM is a header only library that makes a heavy usage of C++ templates. This design may significantly increase the compile time for files that use GLM. Hence, it is important to limit GLM inclusion to header and source files that actually use it. Likewise, GLM extensions should be included only in program sources using them.

To further help compilation time, GLM 0.9.5 introduced `<glm/fwd.hpp>` that provides forward declarations of GLM types.

```
// Header file
#include <glm/fwd.hpp>

// Source file
#include <glm/glm.hpp>
```

### 2.3. Precision qualifiers

GLM supports the precision qualifier through the prefix `lowp_`, `mediump_` and `highp_`. For example `lowp_vec4`, `mediump_vec4` and `highp_vec4` are precision derived types of `vec4`.

By default, all the types use high precision.

```
// Using precision qualifier in GLSL:
ivec3 foo(in vec4 v)
{
```



```

    highp_vec4 a = v;
    mediump_vec4 b = a;
    lowp_ivec3 c = ivec3(b);

    return c;
}

// Using precision qualifier in GLM:
#include <glm/glm.hpp>

ivec3 foo(const vec4 & v)
{
    highp_vec4 a = v;
    medium_vec4 b = a;
    lowp_ivec3 c = glm::ivec3(b);

    return c;
}

```

## 2.4. Default precision

In C++, it is not possible to implement GLSL default precision (GLSL 4.10 specification section 4.5.3) using GLSL syntax.

```

precision mediump int;
precision highp float;

```

To use the default precision functionality, GLM provides some defines that need to add before any include of `glm.hpp`:

```

#define GLM_PRECISION_MEDIUMP_INT;
#define GLM_PRECISION_HIGHP_FLOAT;
#include <glm/glm.hpp>

```

Available defines for floating point types (`glm::vec*`, `glm::mat*`):

GLM\_PRECISION\_LOWP\_FLOAT: Low precision  
 GLM\_PRECISION\_MEDIUMP\_FLOAT: Medium precision  
 GLM\_PRECISION\_HIGHP\_FLOAT: High precision (default)

Available defines for floating point types (`glm::dvec*`, `glm::dmat*`):

GLM\_PRECISION\_LOWP\_DOUBLE: Low precision  
 GLM\_PRECISION\_MEDIUMP\_DOUBLE: Medium precision  
 GLM\_PRECISION\_HIGHP\_DOUBLE: High precision (default)

Available defines for signed integer types (`glm::ivec*`):

GLM\_PRECISION\_LOWP\_INT: Low precision  
 GLM\_PRECISION\_MEDIUMP\_INT: Medium precision  
 GLM\_PRECISION\_HIGHP\_INT: High precision (default)

Available defines for unsigned integer types (`glm::uvec*`):

GLM\_PRECISION\_LOWP\_UINT: Low precision

GLM\_PRECISION\_MEDIUMP\_UINT: Medium precision  
GLM\_PRECISION\_HIGHP\_UINT: High precision (default)

## 2.5. Force use of radians

OpenGL API legacy functions used to take angle values expressed in degrees, a precedent that GLM is following. However, GLSL functions are typically radians based. GLM allows switching all the GLM functions to use radians by declaring GLM\_FORCE\_RADIANS.

```
// Using radians
#define GLM_FORCE_RADIANS
#include <glm/glm.hpp>
#include <glm/gtc/constants.hpp>
#include <glm/gtc/matrix_transform.hpp>

glm::mat4 m(1.0f);
glm::mat4 r(glm::rotate(m, pi * 0.5f, glm::vec3(0, 0, 1)));

// Using degrees
#include <glm/glm.hpp>
#include <glm/gtc/matrix_transform.hpp>

glm::mat4 m(1.0f);
glm::mat4 r(glm::rotate(m, 90.f, glm::vec3(0, 0, 1)));
```

## 2.6. C++ language detection

GLM will automatically take advantage of compilers' language extensions when enabled. To increase cross platform compatibility and to avoid compiler extensions, a programmer can define GLM\_FORCE\_CXX98 before any inclusion of <glm/glm.hpp>.

```
#define GLM_FORCE_CXX98
#include <glm/glm.hpp>
```

For C++11, an equivalent value is available: GLM\_FORCE\_CXX11.

```
#define GLM_FORCE_CXX11
#include <glm/glm.hpp>
```

GLM\_FORCE\_CXX11 overrides GLM\_FORCE\_CXX98 defines.

## 2.7. CUDA support

GLM 0.9.2 introduced CUDA compiler support allowing programmer to use GLM inside a CUDA Kernel. This support is automatic when a GLM header is included inside a CUDA kernel. If necessary, a user can decided to force this support by defining GLM\_FORCE\_CUDA before any inclusion of <glm/glm.hpp>.

```
#define GLM_FORCE_CUDA
#include <glm/glm.hpp>
```

Some GLM functionalities might not be available and will return an error message.

## 2.8. SIMD support

GLM provides some SIMD optimization based on compiler intrinsics. These optimizations will be automatically utilized based on the build environment. These optimizations are mainly available through extensions, `GLM_GTX_simd_vec4` and `GLM_GTX_simd_mat4`.

A programmer can restrict or force instruction sets used for these optimizations using `GLM_FORCE_SSE2` or `GLM_FORCE_AVX`.

A programmer can discard the use of intrinsics by defining `GLM_FORCE_PURE` before any inclusion of `<glm/glm.hpp>`. If `GLM_FORCE_PURE` is defined, then including a SIMD extension will generate a build error.

```
#define GLM_FORCE_PURE
#include <glm/glm.hpp>
```

## 2.9. Force inline

To push further the software performance, a programmer can define `GLM_FORCE_INLINE` before any inclusion of `<glm/glm.hpp>` to force the compiler to inline GLM code.

```
#define GLM_FORCE_INLINE
#include <glm/glm.hpp>
```

## 3. Swizzle operators

A common feature of shader languages like GLSL is the swizzle operators. Those allow selecting multiple components of a vector and change their order. For example, “variable.x”, “variable.xzy” and “variable.zxyy” form respectively a scalar, a three components vector and a four components vector. With GLSL, swizzle operators can be both R-values and L-values. Finally, vector components can be accessed using “xyzw”, “rgba” or “stpq”.

```
vec4 A;  
vec2 B;  
...  
B.yx = A.wy;  
B = A.xx;  
Vec3 C = A.bgr;
```

GLM supports a subset of this functionality as described in the following subsections. Swizzle operators are disabled by default. To enable them GLM\_SWIZZLE must be define before any inclusion of <glm/glm.hpp>. Enabling swizzle operators will massively increase the size of compiled files and the compilation time.

### 3.1. Default C++98 implementation

The C++98 implementation exposes the R-value swizzle operators as member functions of vector types.

```
#define GLM_SWIZZLE  
#include <glm/glm.hpp>  
  
void foo()  
{  
    glm::vec4 ColorRGBA(1.0f, 0.5f, 0.0f, 1.0f);  
    glm::vec3 ColorBGR = ColorRGBA.bgr();  
    ...  
    glm::vec3 PositionA(1.0f, 0.5f, 0.0f, 1.0f);  
    glm::vec3 PositionB = PositionXYZ.xyz() * 2.0f;  
    ...  
    glm::vec2 TexcoordST(1.0f, 0.5f);  
    glm::vec4 TexcoordSTPQ = TexcoordST.stst();  
    ...  
}
```

Swizzle operators return a copy of the component values hence they can’t be used as L-values to change the value of the variables.

```
#define GLM_SWIZZLE  
#include <glm/glm.hpp>  
  
void foo()  
{  
    glm::vec3 A(1.0f, 0.5f, 0.0f);  
  
    // !\ No compiler error but A is not affected  
    // This code modify the components of an anonymous copy.  
    A.bgr() = glm::vec3(2.0f, 1.5f, 1.0f); // A is no modified!  
    ...  
}
```

```
}
```

## 3.2. Anonymous union member implementation

Visual C++ supports anonymous structures in union, which is a non-standard language extension, but it enables a very powerful implementation of swizzle operators on Windows supporting both L-value swizzle operators and a syntax that doesn't require parentheses in some cases. This implementation is only enabled when the language extension is enabled and `GLM_SWIZZLE` is defined.

```
#define GLM_SWIZZLE
#include <glm/glm.hpp>

void foo()
{
    glm::vec4 ColorRGBA(1.0f, 0.5f, 0.0f, 1.0f);

    // l-value:
    glm::vec4 ColorBGRA = ColorRGBA.bgra;

    // r-value:
    ColorRGBA.bgra = ColorRGBA;

    // Both l-value and r-value
    ColorRGBA.bgra = ColorRGBA.rgba;
    ...
}
```

Anonymous union member swizzle operators don't return vector types (`glm::vec2`, `glm::vec3` and `glm::vec4`) but implementation specific objects that can be automatically interpreted by other swizzle operators and vector constructors. Unfortunately, those can't be interpreted by GLM functions so that the programmer must convert a swizzle operators to a vector type or call the `()` operator on a swizzle objects to pass it to another C++ functions.

```
#define GLM_SWIZZLE
#include <glm/glm.hpp>

void foo()
{
    glm::vec4 Color(1.0f, 0.5f, 0.0f, 1.0f);
    ...
    // Generates compiler errors. Color.rgba is not a vector type.
    glm::vec4 ClampedA = glm::clamp(Color.rgba, 0.f, 1.f); // ERROR

    // We need to cast the swizzle operator into glm::vec4

    // With by using a constructor
    glm::vec4 ClampedB = glm::clamp(glm::vec4(Color.rgba), 0.f, 1.f); // OK

    // Or by using the () operator
    glm::vec4 ClampedC = glm::clamp(Color.rgba(), 0.f, 1.f); // OK
    ...
}
```

# 4. Deprecated function replacements

OpenGL 3.0 specification has deprecated some features that have been removed from OpenGL 3.2 core profile specification. GLM provides some replacement functions.

## 4.1. OpenGL functions (Section 2.11.2 Matrices, OpenGL 2.1 specification)

### glRotatef, d}:

```
glm::mat4 glm::rotate(
    glm::mat4 const & m,
    float angle,
    glm::vec3 const & axis);

glm::dmat4 glm::rotate(
    glm::dmat4 const & m,
    double angle,
    glm::dvec3 const & axis);
```

From GLM\_GTC\_matrix\_transform extension: <glm/gtc/matrix\_transform.hpp>

### glScalef, d}:

```
glm::mat4 glm::scale(
    glm::mat4 const & m,
    glm::vec3 const & factors);

glm::dmat4 glm::scale(
    glm::dmat4 const & m,
    glm::dvec3 const & factors);
```

From GLM\_GTC\_matrix\_transform extension: <glm/gtc/matrix\_transform.hpp>

### glTranslatef, d}:

```
glm::mat4 glm::translate(
    glm::mat4 const & m,
    glm::vec3 const & translation);

glm::dmat4 glm::translate(
    glm::dmat4 const & m,
    glm::dvec3 const & translation);
```

From GLM\_GTC\_matrix\_transform extension: <glm/gtc/matrix\_transform.hpp>

### glLoadIdentity:

```
glm::mat4(1.0) or glm::mat4();
glm::dmat4(1.0) or glm::dmat4();
```

From GLM core library: <glm/glm.hpp>

### glMultMatrixf, d}:

```
glm::mat4() * glm::mat4();
glm::dmat4() * glm::dmat4();
```

From GLM core library: <glm/glm.hpp>

### glLoadTransposeMatrixf, d}:

```
glm::transpose(glm::mat4());
glm::transpose(glm::dmat4());
```

From GLM core library: <glm/glm.hpp>

#### glmMultTransposeMatrixf, d}:

```
glm::mat4() * glm::transpose(glm::mat4());  
glm::dmat4() * glm::transpose(glm::dmat4());
```

From GLM core library: <glm/glm.hpp>

#### glmFrustum:

```
glm::mat4 glm::frustum(  
    float left, float right,  
    float bottom, float top,  
    float zNear, float zFar);
```

```
glm::dmat4 glm::frustum(  
    double left, double right,  
    double bottom, double top,  
    double zNear, double zFar);
```

From GLM\_GTC\_matrix\_transform extension: <glm/gtc/matrix\_transform.hpp>

#### glmOrtho:

```
glm::mat4 glm::ortho(  
    float left, float right,  
    float bottom, float top,  
    float zNear, float zFar);
```

```
glm::dmat4 glm::ortho(  
    double left, double right,  
    double bottom, double top,  
    double zNear, double zFar);
```

From GLM\_GTC\_matrix\_transform extension: <glm/gtc/matrix\_transform.hpp>

## 4.2. GLU functions (Chapter 4: Matrix Manipulation, GLU 1.3 specification)

#### glmLookAt:

```
glm::mat4 glm::lookAt(  
    glm::vec3 const & eye,  
    glm::vec3 const & center,  
    glm::vec3 const & up);
```

```
glm::dmat4 glm::lookAt(  
    glm::dvec3 const & eye,  
    glm::dvec3 const & center,  
    glm::dvec3 const & up);
```

From GLM\_GTC\_matrix\_transform extension: <glm/gtc/matrix\_transform.hpp>

#### glmOrtho2D:

```
glm::mat4 glm::ortho(  
    float left, float right, float bottom, float top);
```

```
glm::dmat4 glm::ortho(  
    double left, double right, double bottom, double top);
```

From GLM\_GTC\_matrix\_transform extension: <glm/gtc/matrix\_transform.hpp>

#### glmPerspective:

```
glm::mat4 glm::perspective(  
    float fovy, float aspect, float zNear, float zFar);
```

```
glm::dmat4 glm::perspective(  
    double fovy, double aspect, double zNear, double zFar);
```

From GLM\_GTC\_matrix\_transform extension: <glm/gtc/matrix\_transform.hpp>

### gluPickMatrix:

```
glm::mat4 pickMatrix(  
    glm::vec2 const & center,  
    glm::vec2 const & delta,  
    glm::ivec4 const & viewport);  
  
glm::dmat4 pickMatrix(  
    glm::dvec2 const & center,  
    glm::dvec2 const & delta,  
    glm::ivec4 const & viewport);
```

From GLM\_GTC\_matrix\_transform extension: <glm/gtc/matrix\_transform.hpp>

### gluProject:

```
glm::vec3 project(  
    glm::vec3 const & obj,  
    glm::mat4 const & model,  
    glm::mat4 const & proj,  
    glm::ivec4 const & viewport);  
  
glm::dvec3 project(  
    glm::dvec3 const & obj,  
    glm::dmat4 const & model,  
    glm::dmat4 const & proj,  
    glm::ivec4 const & viewport);
```

From GLM\_GTC\_matrix\_transform extension: <glm/gtc/matrix\_transform.hpp>

### gluUnProject:

```
glm::vec3 unProject(  
    glm::vec3 const & win,  
    glm::mat4 const & model,  
    glm::mat4 const & proj,  
    glm::ivec4 const & viewport);  
  
glm::dvec3 unProject(  
    glm::dvec3 const & win,  
    glm::dmat4 const & model,  
    glm::dmat4 const & proj,  
    glm::ivec4 const & viewport);
```

From GLM\_GTC\_matrix\_transform extension: <glm/gtc/matrix\_transform.hpp>



# 5. Extensions

## 5.1. GLM\_GTC\_constants

Provide a list of built-in constants.

`<glm/gtc/constants.hpp>` need to be included to use these features.

## 5.2. GLM\_GTC\_epsilon

Approximate equal and not equal comparisons with selectable epsilon.

`<glm/gtc/epsilon.hpp>` need to be included to use these features.

## 5.3. GLM\_GTC\_matrix\_access

Define functions to access rows or columns of a matrix easily.

`<glm/gtc/matrix_access.hpp>` need to be included to use these features.

## 5.4. GLM\_GTC\_matrix\_integer

Provide integer matrix types. Inverse and determinant functions are not supported for these types.

`<glm/gtc/matrix_integer.hpp>` need to be included to use these features.

## 5.5. GLM\_GTC\_matrix\_inverse

Define additional matrix inverting functions.

`<glm/gtc/matrix_inverse.hpp>` need to be included to use these features.

## 5.6. GLM\_GTC\_matrix\_transform

Define functions that generate common transformation matrices.

The matrices generated by this extension use standard OpenGL fixed-function conventions. For example, the `lookAt` function generates a transform from world space into the specific eye space that the projective matrix functions (*perspective*, *ortho*, etc) are designed to expect. The OpenGL compatibility specifications define the particular layout of this eye space.

`<glm/gtc/matrix_transform.hpp>` need to be included to use these features.

## 5.7. GLM\_GTC\_noise

Define 2D, 3D and 4D procedural noise functions.

`<glm/gtc/noise.hpp>` need to be included to use these features.

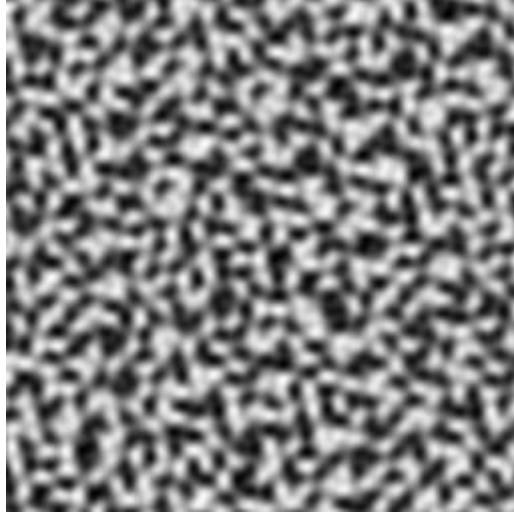


Figure 5.8.1: `glm::simplex(glm::vec2(x / 16.f, y / 16.f));`

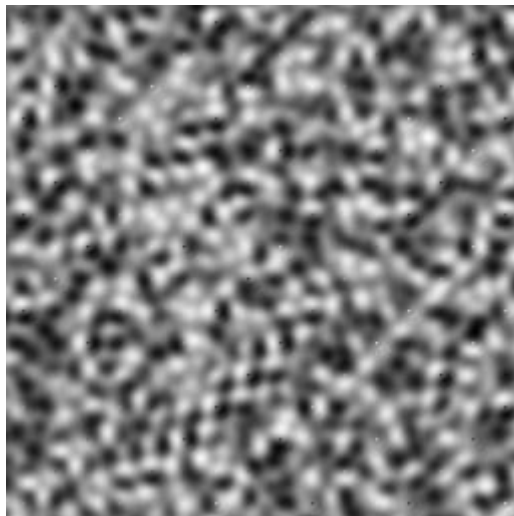


Figure 5.8.2: `glm::simplex(glm::vec3(x / 16.f, y / 16.f, 0.5f));`

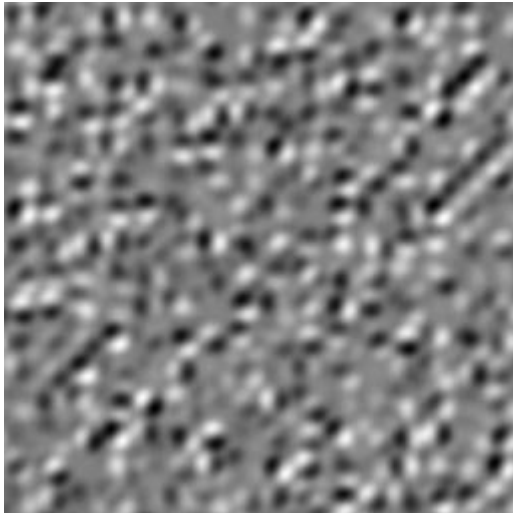


Figure 5.8.3: `glm::simplex(glm::vec4(x / 16.f, y / 16.f, 0.5f, 0.5f));`

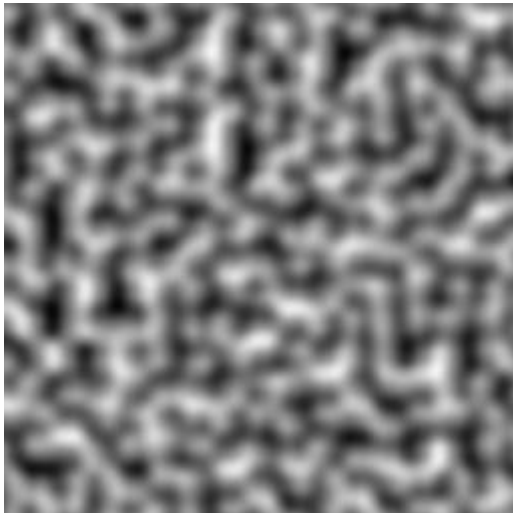


Figure 5.8.4: `glm::perlin(glm::vec2(x / 16.f, y / 16.f));`



Figure 5.8.5: `glm::perlin(glm::vec3(x / 16.f, y / 16.f, 0.5f));`

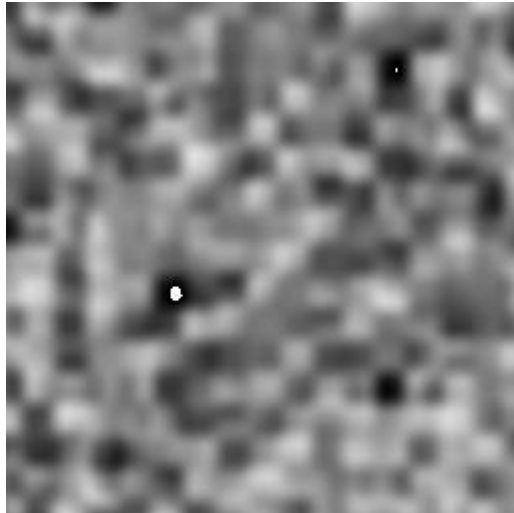


Figure 5.8.6: `glm::perlin(glm::vec4(x / 16.f, y / 16.f, 0.5f, 0.5f));`

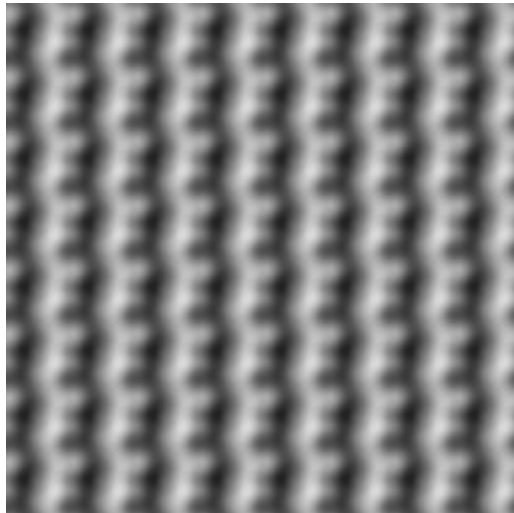


Figure 5.8.7: `glm::perlin(glm::vec2(x / 16.f, y / 16.f), glm::vec2(2.0f));`

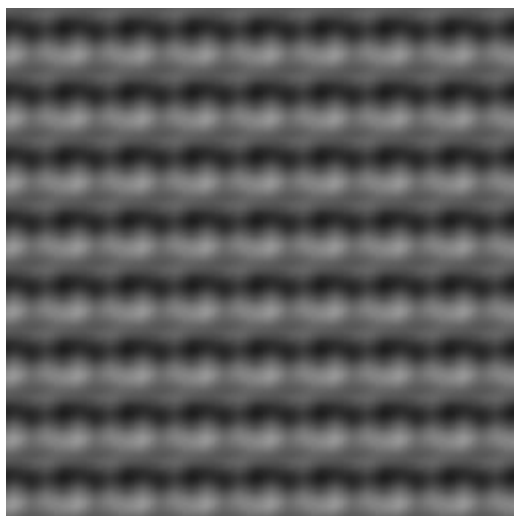


Figure 5.8.8: `glm::perlin(glm::vec3(x / 16.f, y / 16.f, 0.5f), glm::vec3(2.0f));`



Figure 5.8.9: `glm::perlin(glm::vec4(x / 16.f, y / 16.f, glm::vec2(0.5f)),  
glm::vec4(2.0f));`

## 5.8. GLM\_GTC\_packing

Convert scalar and vector types to packed formats. This extension can also unpack packed data to the original format. The use of packing functions will result in precision lost. However, the extension guarantee that packing a value previously unpacked from the same format will be perform loselessly.

`<glm/gtc/packing.hpp>` need to be included to use these features.

## 5.9. GLM\_GTC\_quaternion

Define a quaternion type and several quaternion operations.

`<glm/gtc/quaternion.hpp>` need to be included to use these features.

## 5.10. GLM\_GTC\_random

Generate random number from various distribution methods.

`<glm/gtc/random.hpp>` need to be included to use these features.

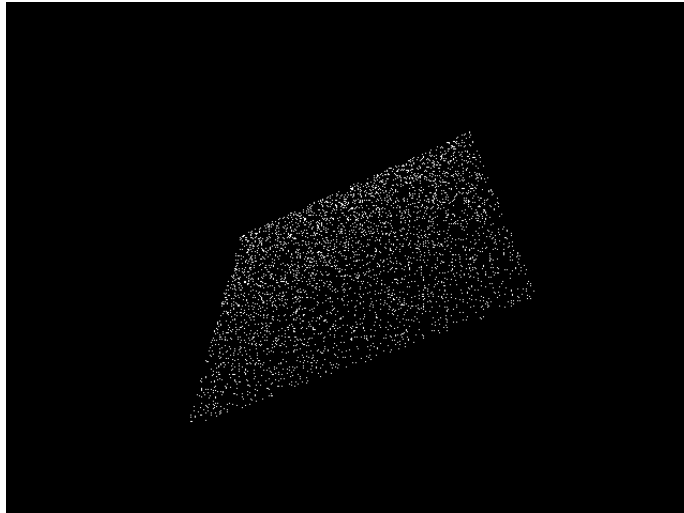


Figure 5.10.1: `glm::vec4(glm::linearRand(glm::vec2(-1), glm::vec2(1)), 0, 1);`

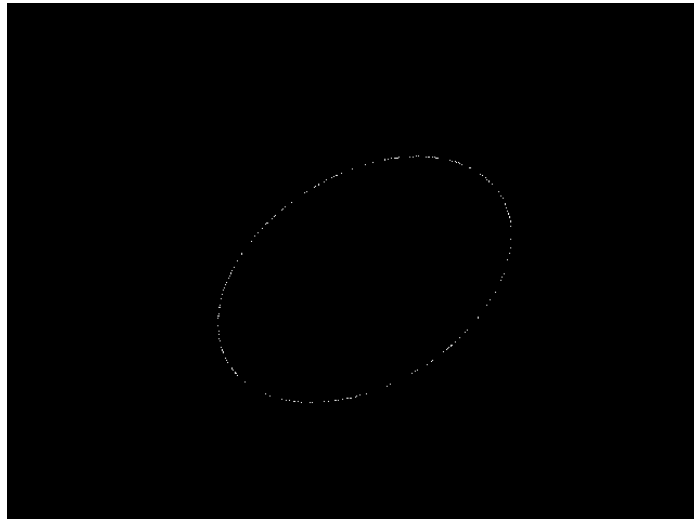


Figure 5.10.2: `glm::vec4(glm::circularRand(1.0f), 0, 1);`

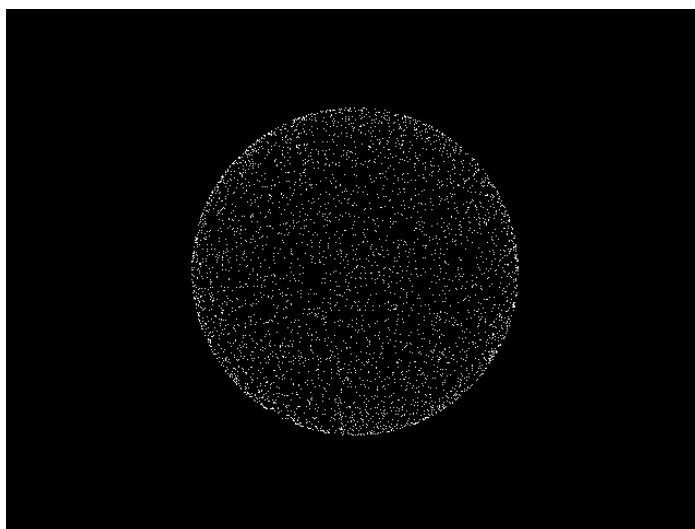


Figure 5.10.3: `glm::vec4(glm::sphericalRand(1.0f), 1);`

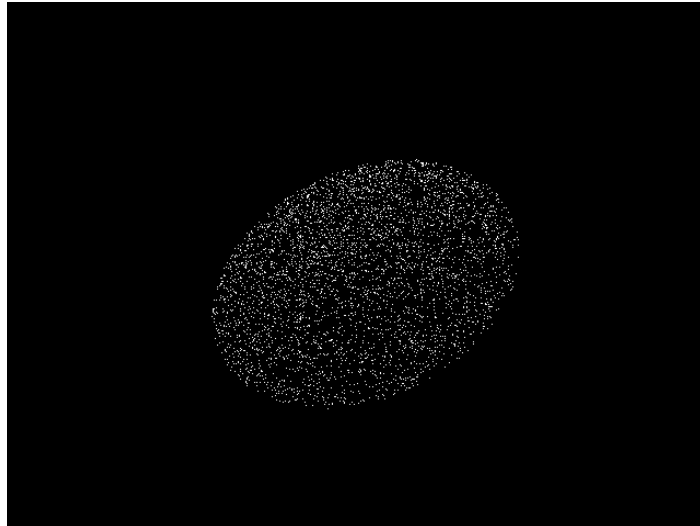


Figure 5.10.4: `glm::vec4(glm::diskRand(1.0f), 0, 1);`

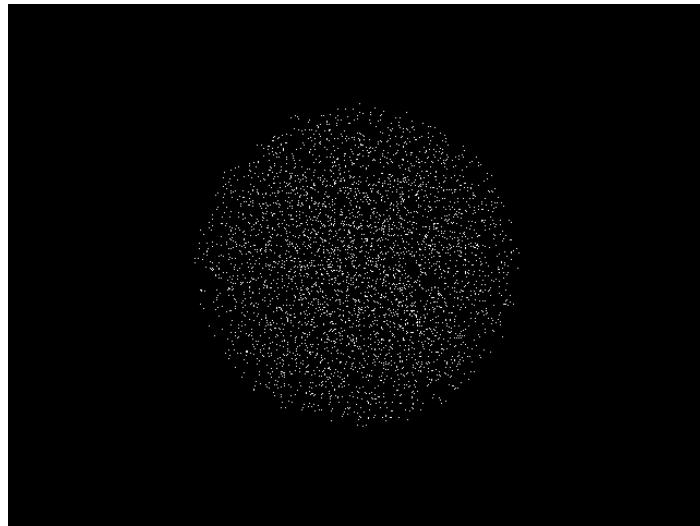


Figure 5.10.5: `glm::vec4(glm::ballRand(1.0f), 1);`

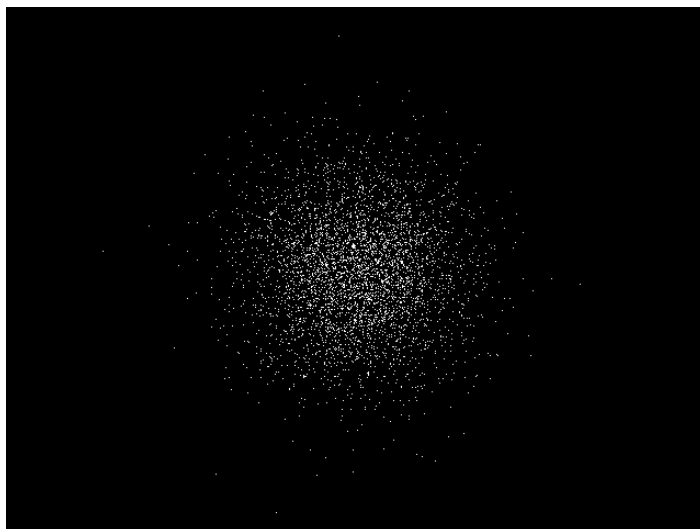


Figure 5.10.6: `glm::vec4(glm::gaussRand(glm::vec3(0), glm::vec3(1)), 1);`

## 5.11. GLM\_GTC\_reciprocal

Provide hyperbolic functions: secant, cosecant, cotangent, etc.

`<glm/gtc/reciprocal.hpp>` need to be included to use these functionalities.

## 5.12. GLM\_GTC\_swizzle

Provide functions to emulate GLSL swizzle operator features but with a different syntax that feats C++ boundaries.

`<glm/gtc/swizzle.hpp>` need to be included to use these functionalities.

## 5.13. GLM\_GTC\_type\_precision

Add vector and matrix types with defined precisions. Eg, `i8vec4`: vector of 4 signed integer of 8 bits.

This extension adds defines to set the default precision of each class of types added:

Available defines for signed 8-bit integer types (`glm::i8vec*`):

GLM\_PRECISION\_LOWP\_INT8: Low precision  
GLM\_PRECISION\_MEDIUMP\_INT8: Medium precision  
GLM\_PRECISION\_HIGHP\_INT8: High precision (default)

Available defines for unsigned 8-bit integer types (`glm::u8vec*`):

GLM\_PRECISION\_LOWP\_UINT8: Low precision  
GLM\_PRECISION\_MEDIUMP\_UINT8: Medium precision  
GLM\_PRECISION\_HIGHP\_UINT8: High precision (default)

Available defines for signed 16-bit integer types (`glm::i16vec*`):

GLM\_PRECISION\_LOWP\_INT16: Low precision  
GLM\_PRECISION\_MEDIUMP\_INT16: Medium precision  
GLM\_PRECISION\_HIGHP\_INT16: High precision (default)

Available defines for unsigned 16-bit integer types (`glm::u16vec*`):

GLM\_PRECISION\_LOWP\_UINT16: Low precision  
GLM\_PRECISION\_MEDIUMP\_UINT16: Medium precision  
GLM\_PRECISION\_HIGHP\_UINT16: High precision (default)

Available defines for signed 32-bit integer types (`glm::i32vec*`):

GLM\_PRECISION\_LOWP\_INT32: Low precision  
GLM\_PRECISION\_MEDIUMP\_INT32: Medium precision  
GLM\_PRECISION\_HIGHP\_INT32: High precision (default)



Available defines for unsigned 32-bit integer types (`glm::u32vec*`):

GLM\_PRECISION\_LOWP\_UINT32: Low precision  
GLM\_PRECISION\_MEDIUMP\_UINT32: Medium precision  
GLM\_PRECISION\_HIGHP\_UINT32: High precision (default)

Available defines for signed 64-bit integer types (`glm::i64vec*`):

GLM\_PRECISION\_LOWP\_INT64: Low precision  
GLM\_PRECISION\_MEDIUMP\_INT64: Medium precision  
GLM\_PRECISION\_HIGHP\_INT64: High precision (default)

Available defines for unsigned 64-bit integer types (`glm::u64vec*`):

GLM\_PRECISION\_LOWP\_UINT64: Low precision  
GLM\_PRECISION\_MEDIUMP\_UINT64: Medium precision  
GLM\_PRECISION\_HIGHP\_UINT64: High precision (default)

Available defines for 32-bit floating-point types (`glm::f32vec*`, `glm::f32mat*`, `glm::f32quat`):

GLM\_PRECISION\_LOWP\_FLOAT32: Low precision  
GLM\_PRECISION\_MEDIUMP\_FLOAT32: Medium precision  
GLM\_PRECISION\_HIGHP\_FLOAT32: High precision (default)

Available defines for 64-bit floating-point types (`glm::f64vec*`, `glm::f64mat*`, `glm::f64quat`):

GLM\_PRECISION\_LOWP\_FLOAT64: Low precision  
GLM\_PRECISION\_MEDIUMP\_FLOAT64: Medium precision  
GLM\_PRECISION\_HIGHP\_FLOAT64: High precision (default)

`<glm/gtc/type_precision.hpp>` need to be included to use these functionalities.

## 5.14. GLM\_GTC\_type\_ptr

Handle the interaction between pointers and vector, matrix types.

This extension defines an overloaded function, `glm::value_ptr`, which takes any of the core template types (`vec3`, `mat4`, etc.). It returns a pointer to the memory layout of the object. Matrix types store their values in column-major order.

This is useful for uploading data to matrices or copying data to buffer objects.

### Example:

```
#include <glm/glm.hpp>
#include <glm/gtc/type_ptr.hpp>

glm::vec3 aVector(3);
glm::mat4 someMatrix(1.0);
```

```
glUniform3fv(uniformLoc, 1, glm::value_ptr(aVector));  
glUniformMatrix4fv(uniformMatrixLoc,  
    1, GL_FALSE, glm::value_ptr(someMatrix));
```

<glm/gtc/type\_ptr.hpp> need to be included to use these features.

## 5.15. GLM\_GTC\_ulp

Allow the measurement of the accuracy of a function against a reference implementation. This extension works on floating-point data and provides results in ULP.

<glm/gtc/ulp.hpp> need to be included to use these features.

## 6. Known issues

This section reports the divergences of GLM with GLSL.

### 6.1. not function

The GLSL keyword `not` is also a keyword in C++. To prevent name collisions, ensure cross compiler support and a high API consistency, the GLSL `not` function has been implemented with the name `not_`.

### 6.2. Swizzle operator limitations

GLM implements only a subset of GLSL swizzle operators. For details on this topic see section 3. *Swizzle operators*.

### 6.3. Precision qualifiers support

GLM supports GLSL precision qualifiers by exposing low precision, medium precision and high precision declinations of vector and matrix types. For more information on the precision qualifier support, see section 2.3. *Precision qualifiers*.

# 7. FAQ

## 7.1 Why GLM follows GLSL specification and conventions?

Following GLSL conventions is a really strict policy of GLM. It has been designed following the idea that everyone does its own math library with his own conventions. The idea is that brilliant developers (the OpenGL ARB) worked together and agreed to make GLSL. Following GLSL conventions is a way to find consensus. Moreover, basically when a developer knows GLSL, he knows GLM.

## 7.2. Does GLM run GLSL program?

No, GLM is a C++ implementation of a subset of GLSL.

## 7.3. Does a GLSL compiler build GLM codes?

No, this is not what GLM attends to do!

## 7.4. Should I use 'GTX' extensions?

GTX extensions are qualified to be experimental extensions. In GLM this means that these extensions might change from version to version without any restriction. In practice, it doesn't really change except time to time. GTC extensions are stabled, tested and perfectly reliable in time. Many GTX extensions extend GTC extensions and provide a way to explore features and implementations and APIs and then are promoted to GTC extensions. This is fairly the way OpenGL features are developed; through extensions.

## 7.5. Where can I ask my questions?

A good place is the [OpenGL Toolkits forum](#) on [OpenGL.org](#).

## 7.6. Where can I find the documentation of extensions?

The Doxygen generated documentation includes a complete list of all extensions available. Explore this [API documentation](#) to get a complete view of all GLM capabilities!

## 7.7. Should I use 'using namespace glm;'

NO! Chances are that if `using namespace glm;` is called, especially in a header file, name collisions will happen as GLM is based on GLSL which uses common tokens for types and functions. Avoiding `using namespace glm;` will a higher compatibility with third party library and SDKs.

## 7.8. Is GLM fast?

First, GLM is mainly designed to be convenient and that's why it is written against GLSL specification. Following the 20-80 rules where 20% of the code grad 80% of the performances, GLM perfectly operates on the 80% of the code that consumes 20% of the performances. This said, on performance critical code section, the developers will probably have to write to specific code based on a specific design to reach peak performances but GLM can provides some descent performances alternatives based on approximations or SIMD instructions.

### **7.9. When I build with Visual C++ with /W4 warning level, I have warnings...**

You should not have any warnings even in /W4 mode. However, if you expect such level for you code, then you should ask for the same level to the compiler by at least disabling the Visual C++ language extensions (/Za) which generates warnings when used. If these extensions are enabled, then GLM will take advantage of them and the compiler will generate warnings.

### **7.10. Why some GLM functions can crash because of division by zero?**

GLM functions crashing is the result of a domain error that follows the precedent given by C and C++ libraries. For example, it's a domain error to pass a null vector to `glm::normalize` function.

## 8. Code samples

This series of samples only shows various GLM features without consideration of any sort.

### 8.1. Compute a triangle normal

```
#include <glm/glm.hpp> // vec3 normalize cross

glm::vec3 computeNormal
(
    glm::vec3 const & a,
    glm::vec3 const & b,
    glm::vec3 const & c
)
{
    return glm::normalize(glm::cross(c - a, b - a));
}

// A much faster but less accurate alternative:
#include <glm/glm.hpp> // vec3 cross
#include <glm/gtx/fast_square_root.hpp> // fastNormalize

glm::vec3 computeNormal
(
    glm::vec3 const & a,
    glm::vec3 const & b,
    glm::vec3 const & c
)
{
    return glm::fastNormalize(glm::cross(c - a, b - a));
}
```

### 8.2. Matrix transform

```
// vec3, vec4, ivec4, mat4
#include <glm/glm.hpp>
// translate, rotate, scale, perspective
#include <glm/gtc/matrix_transform.hpp>
// value_ptr
#include <glm/gtc/type_ptr.hpp>

void setUniformMVP
(
    GLuint Location,
    glm::vec3 const & Translate,
    glm::vec3 const & Rotate
)
{
    glm::mat4 Projection =
    glm::perspective(45.0f, 4.0f / 3.0f, 0.1f, 100.f);
    glm::mat4 ViewTranslate = glm::translate(
    glm::mat4(1.0f),
    Translate);
    glm::mat4 ViewRotateX = glm::rotate(
    ViewTranslate,
    Rotate.y, glm::vec3(-1.0f, 0.0f, 0.0f));
    glm::mat4 View = glm::rotate(
    ViewRotateX,
    Rotate.x, glm::vec3(0.0f, 1.0f, 0.0f));
    glm::mat4 Model = glm::scale(
```

```

        glm::mat4(1.0f),
        glm::vec3(0.5f));
    glm::mat4 MVP = Projection * View * Model;
    glUniformMatrix4fv(Location, 1, GL_FALSE, glm::value_ptr(MVP));
}

```

### 8.3. Vector types

```

#include <glm/glm.hpp> //vec2
#include <glm/gtc/type_precision.hpp> //hvec2, i8vec2, i32vec2

std::size_t const VertexCount = 4;

// Float quad geometry
std::size_t const PositionSizeF32 = VertexCount * sizeof(glm::vec2);
glm::vec2 const PositionDataF32[VertexCount] =
{
    glm::vec2(-1.0f, -1.0f),
    glm::vec2( 1.0f, -1.0f),
    glm::vec2( 1.0f,  1.0f),
    glm::vec2(-1.0f,  1.0f)
};
// Half-float quad geometry
std::size_t const PositionSizeF16 = VertexCount * sizeof(glm::hvec2);
glm::hvec2 const PositionDataF16[VertexCount] =
{
    glm::hvec2(-1.0f, -1.0f),
    glm::hvec2( 1.0f, -1.0f),
    glm::hvec2( 1.0f,  1.0f),
    glm::hvec2(-1.0f,  1.0f)
};
// 8 bits signed integer quad geometry
std::size_t const PositionSizeI8 = VertexCount * sizeof(glm::i8vec2);
glm::i8vec2 const PositionDataI8[VertexCount] =
{
    glm::i8vec2(-1, -1),
    glm::i8vec2( 1, -1),
    glm::i8vec2( 1,  1),
    glm::i8vec2(-1,  1)
};
// 32 bits signed integer quad geometry
std::size_t const PositionSizeI32 = VertexCount * sizeof(glm::i32vec2);
glm::i32vec2 const PositionDataI32[VertexCount] =
{
    glm::i32vec2(-1, -1),
    glm::i32vec2( 1, -1),
    glm::i32vec2( 1,  1),
    glm::i32vec2(-1,  1)
};
};

```

### 8.4. Lighting

```

#include <glm/glm.hpp> // vec3 normalize reflect dot pow
#include <glm/gtx/random.hpp> // vecRand3

// vecRand3, generate a random and equiprobable normalized vec3
glm::vec3 lighting
(
    intersection const & Intersection,
    material const & Material,
    light const & Light,
    glm::vec3 const & View
)

```

```

{
    glm::vec3 Color = glm::vec3(0.0f);
    glm::vec3 LightVector = glm::normalize(
        Light.position() - Intersection.globalPosition() +
        glm::vecRand3(0.0f, Light.inaccuracy()));
    if(!shadow(
        Intersection.globalPosition(),
        Light.position(),
        LightVector))
    {
        float Diffuse = glm::dot(Intersection.normal(), LightVector);
        if(Diffuse <= 0.0f)
            return Color;
        if(Material.isDiffuse())
            Color += Light.color() * Material.diffuse() * Diffuse;
        if(Material.isSpecular())
        {
            glm::vec3 Reflect = glm::reflect(
                -LightVector,
                Intersection.normal());
            float Dot = glm::dot(Reflect, View);
            float Base = Dot > 0.0f ? Dot : 0.0f;
            float Specular = glm::pow(Base, Material.exponent());
            Color += Material.specular() * Specular;
        }
    }
    return Color;
}

```



# 9. References

## 9.1. GLM development

- [GLM website](#)
- [GLM HEAD snapshot](#)
- [GLM bug report and feature request](#)
- [G-Truc Creation's page](#)

## 9.2. OpenGL specifications

- [OpenGL 4.3 core specification](#)
- [GLSL 4.30 specification](#)
- [GLU 1.3 specification](#)

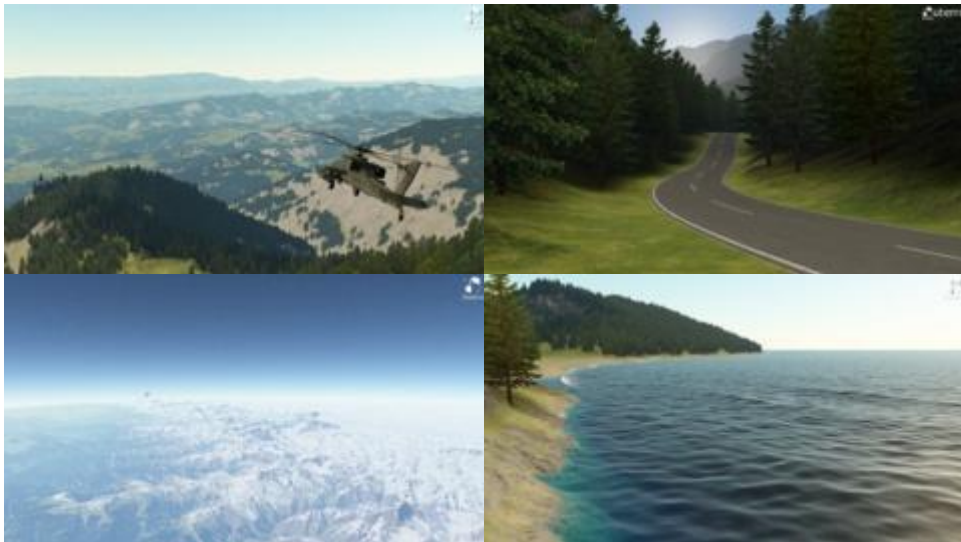
## 9.3. External links

- [The OpenGL Toolkits forum to ask questions about GLM](#)

## 9.4. Projects using GLM

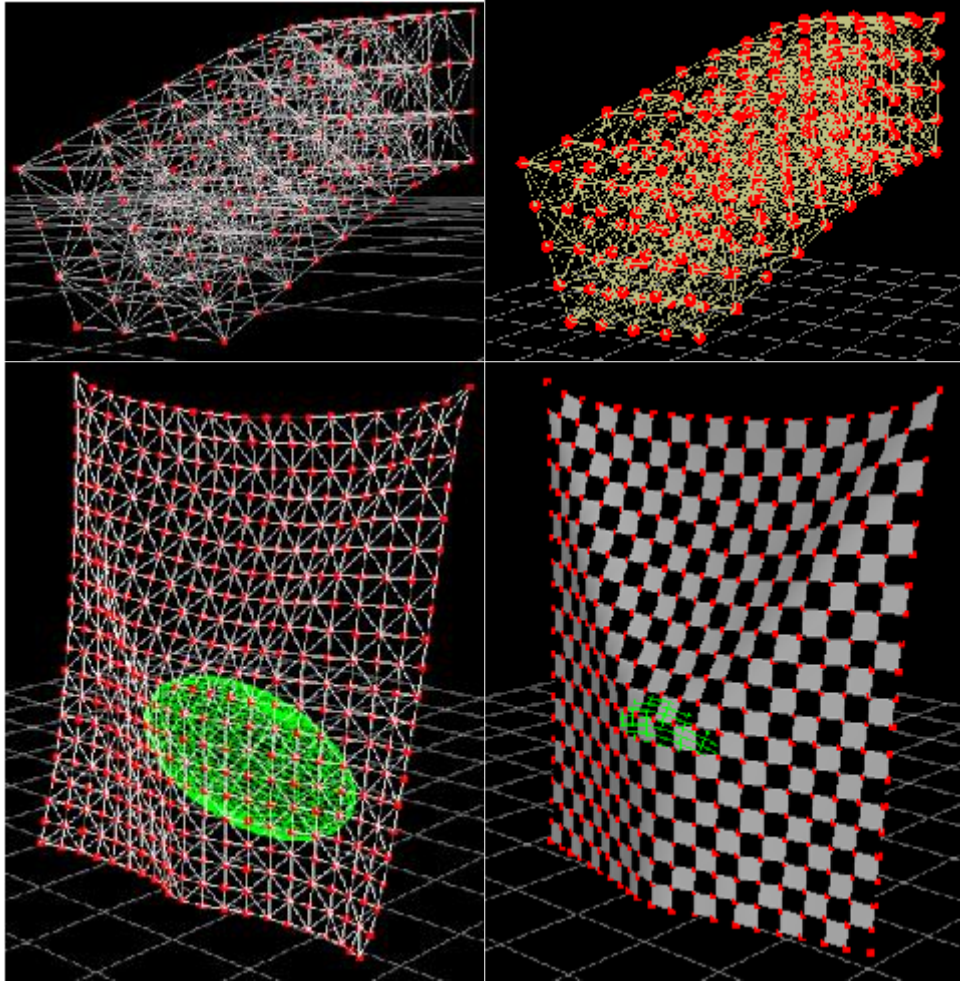
### Outerra

3D planetary engine for seamless planet rendering from space down to the surface. Can use arbitrary resolution of elevation data, refining it to centimeter resolution using fractal algorithms.



### opencloth

A collection of source codes implementing cloth simulation algorithms in OpenGL.



## OpenGL 4.0 Shading Language Cookbook

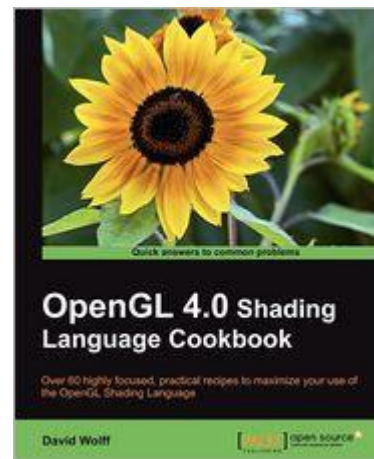
A full set of recipes demonstrating simple and advanced techniques for producing high-quality, real-time 3D graphics using GLSL 4.0.

How to use the OpenGL Shading Language to implement lighting and shading techniques.

Use the new features of GLSL 4.0 including tessellation and geometry shaders.

How to use textures in GLSL as part of a wide variety of techniques from basic texture mapping to deferred shading.

Simple, easy-to-follow examples with GLSL source code, as well as a basic description of the theory behind each



technique.

### **Are you using GLM in a project?**

## **9.5. OpenGL tutorials using GLM**

- The OpenGL Samples Pack, samples that show how to set up all the different new features
- Learning Modern 3D Graphics Programming, a great OpenGL tutorial using GLM by Jason L. McKesson
- Morten Nobel-Jørgensen's review and use an OpenGL renderer
- Swiftless' OpenGL tutorial using GLM by Donald Urquhart
- Rastergrid, many technical articles with companion programs using GLM by Daniel Rákos
- OpenGL Tutorial, tutorials for OpenGL 3.1 and later
- OpenGL Programming on Wikibooks: For beginners who are discovering OpenGL.
- 3D Game Engine Programming: Learning the latest 3D Game Engine Programming techniques.

- Are you using GLM in a tutorial?

## **9.6. Alternatives to GLM**

- CML: The CML (Configurable Math Library) is a free C++ math library for games and graphics.
  - Eigen: A more heavy weight math library for general linear algebra in C++.
  - glhlib: A much more than glu C library.
- Are you using or working an alternative library to GLM?

## **9.7. Acknowledgements**

GLM is developed and maintained by Christophe Riccio but many contributors have made this project what it is.

Special thanks to:

- Ashima Arts and Stefan Gustavson for their work on webgl-noise which has been used for GLM noises implementation.
- Arthur Winters for the C++11 and Visual C++ swizzle operators implementation and tests.
- Joshua Smith and Christoph Schied for the discussions and the experiments around the swizzle operator implementation issues.
- Guillaume Chevallereau for providing and maintaining the nightlight build system.
- Ghenadii Ursachi for GLM\_GTX\_matrix\_interpolation implementation.
- Mathieu Roumillac for providing some implementation ideas.

- Grant James for the implementation of all combination of none-squared matrix products.
- All the GLM users that have report bugs and hence help GLM to become a great library!

## 9.8. Quotes from the web

“I am also going to make use of boost for its time framework and the matrix library GLM, a GL Shader-like Math library for C++. A little advertise for the latter which has a nice design and is useful since matrices have been removed from the latest OpenGL versions”

Code Xperiments

“OpenGL Mathematics Library (GLM): Used for vector classes, quaternion classes, matrix classes and math operations that are suited for OpenGL applications.”

Jeremiah van Oosten

“Today I ported my code base from my own small linear algebra library to GLM, a GLSL-style vector library for C++. The transition went smoothly.”

Leonard Ritter

“A more clever approach is to use a math library like GLM instead. I wish someone had showed me this library a few years ago.”

Morten Nobel-Jørgensen